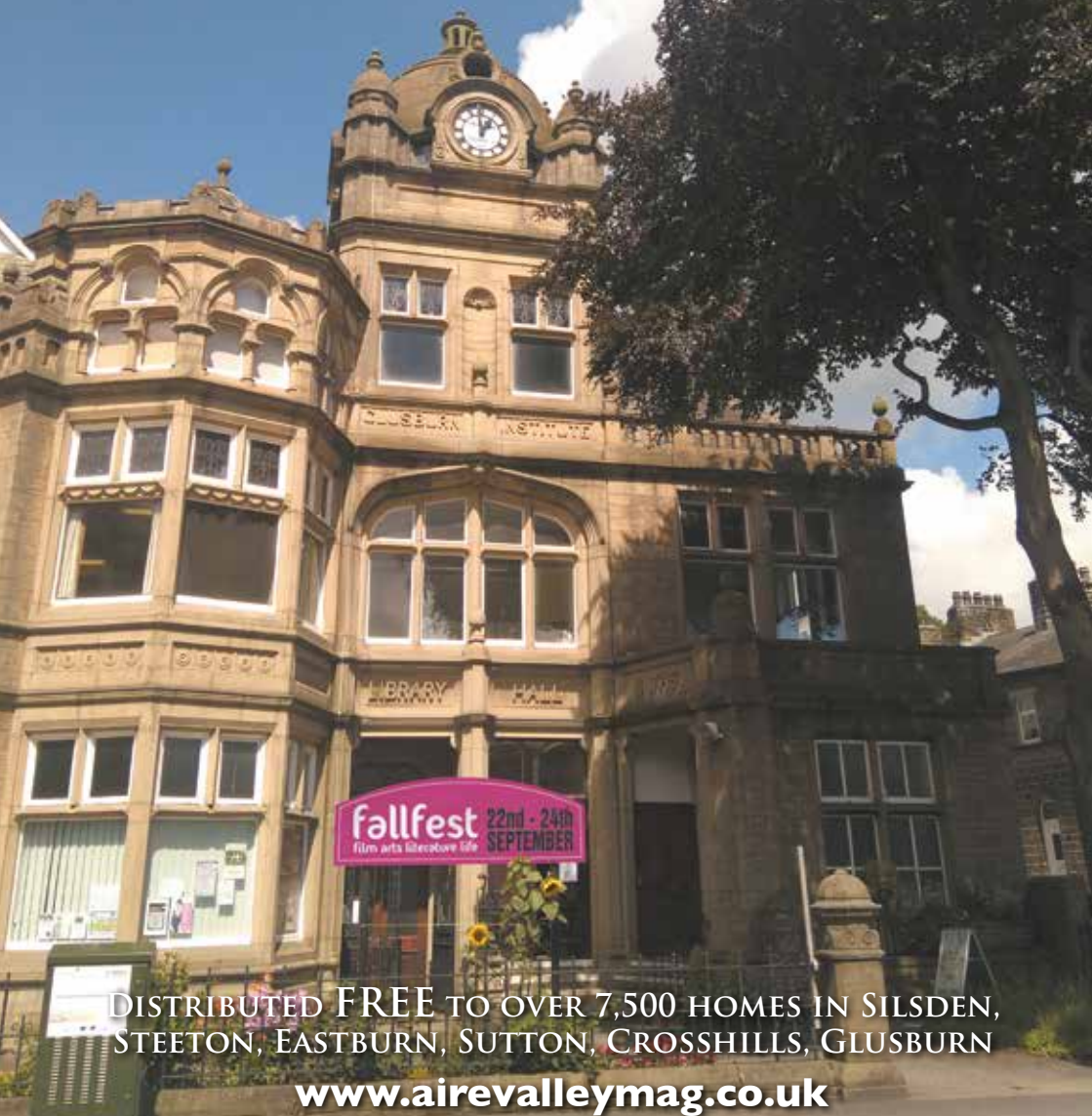


AIRE VALLEY MAG

COMMUNITY NEWS AND LOCAL BUSINESS DIRECTORY

September 2017



DISTRIBUTED FREE TO OVER 7,500 HOMES IN SILSDEN,
STEETON, EASTBURN, SUTTON, CROSSHILLS, GLUSBURN

www.airevalleymag.co.uk

live happy!

with Slimming World

WEDNESDAY
5:00PM or 7:00PM
Oakworth Holden Hall
Call Andrea: 01535 642319

MONDAY
7:00PM Laycock Village Hall
Call Lynn: 07800 865331

TUESDAY
3:30, 5:30 or 7:30PM
LongLee Methodist Chapel
Call/text Carla: 07881953118

ALSO WEDNESDAY
7:00PM Riddlesden Reformed Church
Call/text Barbara: 07582 468366

THURSDAY
9:30AM Riddlesden Reformed Church
Call/text Barbara: 07582 468366

THURSDAY cont.
5pm or 7pm
Haworth Baptist Centre
Call Andrea: 01535 642319

SATURDAY
8:30AM or 10:30AM
Church of Nazarene
Oakworth Rd, Keighley
Call/text Lynn: 07800 865331

slimmingworld.co.uk 0344 897 8000

Slimming WORLD
touching hearts, changing lives

WANTED: COMMUNITY MAGAZINE DELIVERERS

- ✓ Earn extra money
- ✓ Get fit
- ✓ Help a community business
- ✓ For ages 14 - 84

We are looking for committed hardy individuals (no matter the weather!) willing to make regular monthly deliveries in the Worth & Aire valleys. We do our best to find a round close to your home. **To apply contact Kay:** kaybinns2014@gmail.com include your name, address, & contact details.



September is that wonderful transitional month; summer often surprises us with a late burst of warmth before the crisp autumnal weather sets in. It is a perfect time to enjoy the outdoors. We continue with our series of local walks. Pull out the map from the centre spread and save it for just such an occasion.

This is also the perfect time of year to book a workshop, take a class, or learn a new skill. There is the Bronte Festival of Women's Writing (p12/13), a variety of courses at Keighley College (p29), personal & business computer classes at Airedale Enterprise (p22), and if you want a little job delivering the magazine, we are hiring! (see left)

Be sure to book your tickets for the FallFest...We'll be there sipping on gin and enjoying the festive atmosphere.

Enjoy!

Liz Barker, Editor

Bradford Grammar School

BradfordGrammar.com
@BradfordGrammar

At ease with excellence

Open Event
Saturday 7 October
bradfordgrammar.com/signup

Regular open events for Junior, Senior and Sixth Form

Bingley Windows & Glass Co. Ltd.

Always great value, always great service!

- Specialising in 'A' rated energy windows, doors, bi-folds & conservatories; all modern colors available.
- Recommended installers for Solidor & Rockdoor composite doors.
- Fully equipped in house glass shop.
- All installations backed by Certass & accredited by the TRUSTMARK scheme.
- Accurate free quotes generated promptly.

Fed up with cloudy windows? We can repair or replace & improve the efficiency of your windows.

Call us today 01535 958 183

(01535) 958 183
07966 906 782
admin@bingleywindowsandglass.co.uk
www.bingleywindowsandglass.co.uk
Unit 3E, Aireworth Mills, Aireworth Road, Keighley, BD21 4DH (off Marley Roundabout)

CERTASS Working alongside **Cobbydale Construction Limited**

Say you saw it in the Aire Valley Mag!

HOME VISITING SERVICE NOW AVAILABLE

Free Eye tests brought to your door - we bring the test room to you, giving you a full eye test in the comfort of your own home.

- Providing a service to you in the community that is professional yet personal.
- Home delivery service also available at no extra cost.
- Professional eye care for you.
- Taking on new patients call to make your appointment today.

SILSDEN
OPTICIANS

Silsden Opticians 17 Briggate, Silsden BD20 9JS ■ Tel: 01535 658 330
www.silsdenoptician.co.uk ■ email: silsdenopticians@outlook.com.



We're family when family can't be there

Companion Driving Service

Want to get out and about? It's so much more than help travelling from one place to another. **Driving Miss Daisy** is a comprehensive transport service that enables you to enjoy your life.

The perfect choice if you...

- Would like to go shopping or have several stops to make?
- Have a hospital, doctor's or other appointment to keep?
- Are looking for a friendly & reliable driving service for the elderly?
- Would you like a day trip with Driving Miss Daisy?
- Would you like to go on a small group outing?
- Would like to go to a Wedding/function - we can also assist family members.



Ring Martin & Sally for
Keighley & surrounding
areas 07977 065316.

All our vehicles have
wheelchair access.
We are proud to be
Dementia Friendly.

Book your Daisy!
0333 014 6211



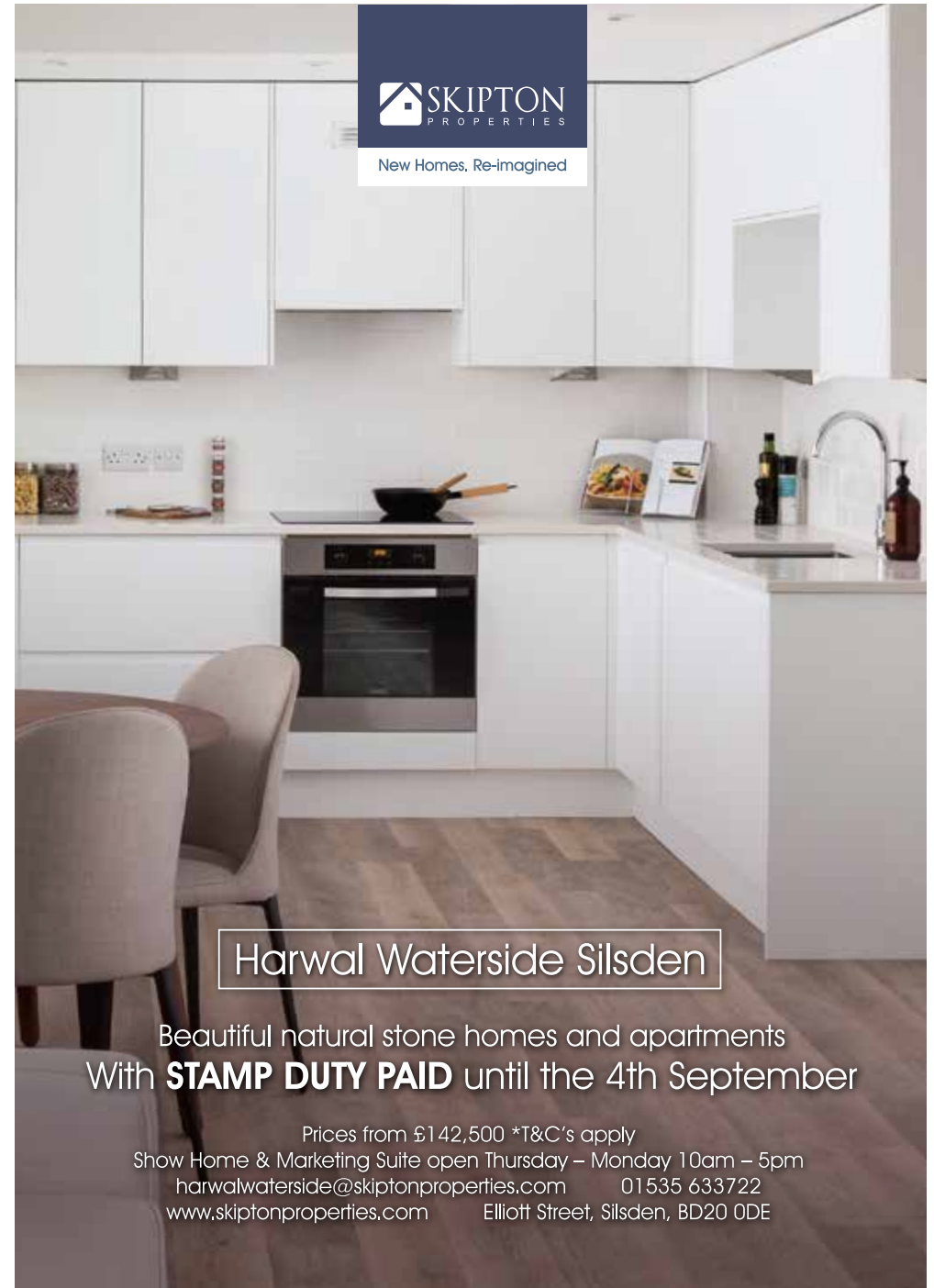
DBS checked, Dementia Friend,
First-Aid trained, Fully Licensed,
Manual wheelchair accessible.

www.drivingmissdaisy.co.uk

Visit our Facebook page DrivingMissDaisyKeighley
email: Keighley@drivingmissdaisy.co.uk



New Homes, Re-imagined



Harwal Waterside Silsden

Beautiful natural stone homes and apartments
With **STAMP DUTY PAID** until the 4th September

Prices from £142,500 *T&C's apply
Show Home & Marketing Suite open Thursday – Monday 10am – 5pm
harwalwaterside@skiptonproperties.com 01535 633722
www.skiptonproperties.com Elliott Street, Silsden, BD20 0DE



Registered Charity No. 1162052

Rehoming unwanted, mistreated and abandoned dogs in Keighley and the surrounding areas.

Can you offer a loving home to one of our dogs? We are a foster home based rescue. All our dogs are neutered, vaccinated and microchipped. We have dogs of all ages and sizes requiring new loving homes. Contact us to arrange a homecheck!

Website: www.aireworthdogsinnneed.co.uk
 Email: aireworthdogsinnneed@gmail.com
 Telephone: 07551 891117

Aireworth Dogs in Need (ADIN) is a local dog rescue charity. Many of the dogs joining the rescue are re-homed at the request of owners due to changes in circumstances but a significant number are picked up as strays having been abandoned or unclaimed from the dog pound.

One such dog was an 8 year old Staffy girl (Cath) found tied to a lamp-post in a sorry state. She had ulcerated sores, bald patches, some lumps and was underweight.

Luckily fate was about to play its part. Local family Maranda and Jonnie and their children enquired about fostering. They met Cath, chatted to volunteers and went away with some thinking to do! They offered to take Cath on a temporary basis to allow her to enjoy some home comforts, be assessed in terms of personality and temperament and crucially to start vet treatment. Cath made herself at home immediately. She proved to be the perfect house guest and



was fantastic with the children.

Sadly the news when she got to the vets was less positive. Tests showed the largest lump on her mammary was an aggressive type of cancer requiring surgery. The treatment was funded by ADIN who cover the costs of all medical treatment for dogs on foster. This can be a challenge for a small charity reliant on donations, the rehoming fee charged to adopters and tireless fundraising efforts by the team and supporters.

Surgery was successful and the vet was confident the cancer was removed. Being in a loving home environment ensured Cath's other sores, ulcers and bald patches began to heal. It was a stressful time for the family who had grown attached to her. They also worked on helping Cath feel more comfortable with other dogs and to walk nicely on a lead. 3 months later Cath had the all-clear and the family decided that having been through what they had she wasn't going anywhere! They asked ADIN if they could adopt Cath, by now renamed Daisy, and the trustees were delighted to agree. They family held an adoption day party to officially welcome Daisy to the family.

ADIN are always on the look-out for families to offer temporary and permanent homes to dogs in need. If you would like more information you can visit the website at www.aireworthdogsinnneed.co.uk or find them on twitter and facebook.



In Home Wills

Will writing specialists
Will writers and estate planners



WILLS START FROM AS LITTLE AS £99.95

DON'T DELAY MAKE YOUR WILL TODAY IN THE COMFORT OF YOUR OWN HOME



SPECIAL OFFER Lasting Powers of Attorney £295.95 or 2 for £499.95.

FREE Safe Hands Funeral Plan with every consultation.

(appointments made at your convenience including evenings and weekends).

For more information call Peter on 0845 056 9049

Locally based.

info@inthewills.co.uk • www.inthewills.co.uk

In Home Wills is a member of The Society of Will Writers and Estate Planning Practitioners. Specialists in all types of Wills, Trusts & Probate.

Has Your Double Glazing Steamed Up?

We can SAVE your windows!

All glazing backed by our

25 YEAR GUARANTEE

SAVE money, energy & time

Replace the pane, not the frame



We are a Which? Trusted Trader

Your local trusted expert

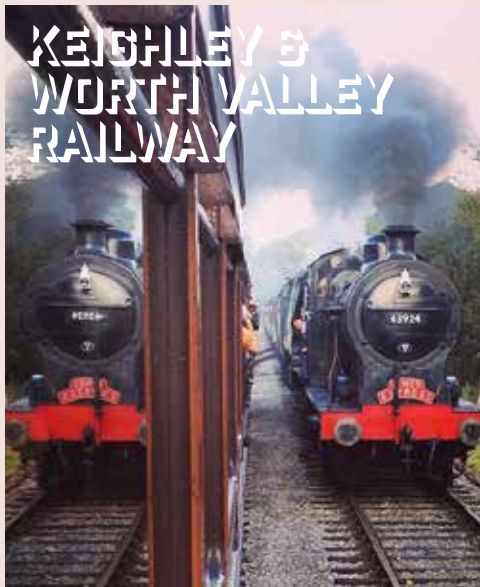
Faulty locks, handles or hinges!



Priority freephone
0800 61 21 118
www.cloudy2clear.com

SAVE money - SAVE energy - SAVE time





Running the railway is a year-round challenge, not least because our events take months and months of planning. We're already looking forward, for example, to next year's celebration of the reopening of the line back in June 1968 and have just announced an 8-day long 50th Anniversary Event (June 24th - July 1st). Overhauling the locomotive that hauled the reopening train in 1968 has taken several years of work and nearly £300,000. We are nearing the end of the of overhaul process and very much hope that the efforts of our volunteers involved in the project will mean that we can recreate many elements of the actual train that reopened the line to passengers in 1968, including this special locomotive to head the train. As well as thinking about next summer, we are also already looking forward to Christmas, with our bookings for the 2017 Santa Specials now open and some days already selling fast, so please do book soon to avoid disappointment. We've been running the Santa Specials

for decades, having invented the format that many heritage railways have adopted, but we've come a very long way from the earliest days when a single carriage was run into Haworth station, from which Santa alighted to greet the waiting children. It's now an on-board experience, complemented by the fantastic Winter Wonderland at Oxenhope, with gifts for the children and a fantastic experience that many generations of families continue to enjoy.

Realising that we have been operating the railway for nearly 50 years, and how much the railway has developed in that time, reminds us of our responsibility to keep this really important part of history alive. That means we need to retain the engineering skills needed to overhaul steam locomotives and carriages, which gets ever-more challenging and highly-skilled as the rolling stock and loco's get increasingly elderly. We are also at the stage where we need re-invest in our operational infrastructure, so are currently running projects to replace the roof of the locomotive shed at Haworth and to protect the 'wheel drop' facility, both of which are vital to the operation of the railway. Keeping the wheels turning is an on-going challenge as we look for people willing to support and organise the events, train new volunteers and help us with responding to challenge of knowledge-sharing and -transfer from our senior volunteers to the next generation, as well as looking for more volunteers to work directly on the operation and the maintenance of the railway. I do hope that you will join us when we celebrate our 50th Anniversary next year and it would be even better if you would consider celebrating as a volunteer.

**KWVR Chairman
Matt Stroh**



NEED AN ELECTRICIAN? JS Electrical
 CONTACT: JONATHAN SCOTT
 MOBILE: 07732 174 201
 HOME: 01535 644421
 E-MAIL: JS.ELECTRICAL@OUTLOOK.COM

ELECSA Part P Approved Contractor
GOVERNMENT APPROVED REGISTRATION SCHEME FOR ELECTRICAL CONTRACTORS

Oakworth

AA ELECTRICAL
 Covering Silsden, Skipton & Surrounding Villages

- All Electrical Work
- Plumbing
- 20% Discount For OAP
- Competitive Rates
- All Work Guaranteed
- No Job Too Small or Too Large

Call Alan Menzies For A Friendly, Helpful Service
 Mob: 07866 458844
 Tel: 01535 657429
 Call now for a free electric check

MB ROOFING

Local & Reliable, Over 10 Years Experience
 Full Roof Replacements, Small Roof Repairs, Joinery, Soffits, Guttering, Sheds, Fencing & Much More
 Warranty Available (Job Dependent)
 Call Matthew Now & Get A Fast Free Quote
 Tel: 01535 608986 Mob: 07808 158588
 mbroofing625@gmail.com

Broomhill Roofing

Firestone Rubber Membrane Flat Roofing Systems
 20 year Guarantee
 New Slate & Tiled Roofs, Roof Repairs, Fascia's, Guttering & Velux Windows
 Telephone to arrange a free no obligation survey & quote
 Tel: 01535 628821 www.broomhillroofing.com

Firestone HighTechCover
 Checkatrade.com

I.L.R Aerials

Digital Aerials & Freesat Systems Supplied and Fitted

freesat Freeview
 For Prompt Reliable Service Guaranteed
 07916 144709

Digi-Man Aerials

Digital Aerials & Satellites

Fully Qualified Installer of
 Freeview freesat
 Sky & Sky HD Problems Solved
 Freeview / Digital Problems Solved
 For a FREE Quote & Advice
 Call Digi-Man Aerials

OAP DISCOUNT
 ALL WORK GUARANTEED
 LOCAL MAN

Mention this magazine & Get 10% Off
 Friendly Professional service
 Freephone: 0800 0377011
 call now 01535 646141

LOVE YOUR FIRE Anchor Logs™

ORNAMENTAL BARK | KILN DRIED HARDWOOD LOGS
 KINDLING | LOG STORES
 Tel: 01756 748342
 Mobile: 07977 011215 or 07801 595333
 Email: hello@anchorlogs.co.uk
 Web: www.anchorlogs.co.uk (order and pay online)

Sudoku Puzzles

	9		8			5		
1	6	4		2		9		
			1	4		7		
9	4	7						
	3			7				
				1	8	5		
4	7		6					
	6		3		7	5	8	
9			8		1			

		7	3				1	
	9					4		
3							5	
2		6	4		1			
8	3	9	5	1	2	7		
	4		7	8			9	
9							3	
	2					8		
6			8	5				

		7		9		5		
4		8						
	1	9	3					
			8		1	7		
9	7		3	8	6			
2	8		1					
	4		1	7				
			5		4			
3	2		6					

			1	6		5		
	7	9	3					
8			4			1		
					2			
4	2			8		3		
	5							
9			5				7	
			8	1	9			
3	1		6					

To solve a sudoku puzzle, each row of nine squares must contain the numbers 1 through 9. Each column must also contain the numbers 1 through 9, and each box must contain the numbers 1 through 9. See page 29 for solutions.

FENETIC WELLBEING
www.feneticwellbeing.com
Internet Prices from Local Company!!!!

WINNER
Keighley **BUSINESS**
Award
...Business of the Year

Wheelchairs from £69.99

Recliner Chairs from £249.99

Walking Frames from £39.99

Based in Keighley we have a huge selection of products.
For more information call 0800 567 7618 or check out our website www.feneticwellbeing.com

Your local service for this & more:

eBit

- Computer & Laptop repairs
- Web Design
- Upgrades & New computers!

Call Andrew on: 07779 631370

Computer Service for the Home & Business

www.ebit-technology.co.uk

Computer Repairs

Computer Repairs at Home or Office
Friendly service with over 15 Years experience

- PC Upgrades • Broadband/Network Setup
- Virus Removal • PC Tune Up
- Computer Security

Damian@cyberwink.co.uk
01535 654168 or 07946 596429

R.P. DECORATING

All Aspects of Decorating
Interior & Exterior
Domestic & Commercial
City & Guilds Qualified
Over 20 Years Experience

FOR FREE PROFESSIONAL ADVICE AND QUOTATIONS CALL

T: 01535 642 864 M: 07989 560 206
MEMBER OF THE PAINTING & DECORATING ASSN.

fallfest

film arts literature life

22nd-24th SEPT 2017

www.fallfest.co.uk

Fri. 22nd (7pm)

Falling Stars Theatre Company presents,
Jim Cartwright's play 'Two'

Sat. 23rd (11:30am onwards)

Farmer's Market; Children's Activities;
Live Music & Dance; 5 Mile Trail Race;
Hog Roast; Beer & Gin Festival

**Sat. 23rd (7:30pm)
Gala Event**

Brit Award winner
Beverley Craven, singer/
songwriter.



Optional pre-show Gastro-pub meal.

Sun. 24th (2pm)

Matinee performance of Falling Stars
Theatre Company 'Two'

Fallfest Beer & GinFest runs from Friday evening across the entire weekend.
Featuring 18 Craft Beers & a wide selection of quality gins and botanicals

For Full Details of any of the above please visit www.fallfest.co.uk

Glusburn Institute & Arts Centre,
Colne Road BD20 8PJ

Ticket Line: **08438 86 89 49**

We've had a wonderful summer at the Brontë Parsonage Museum and have welcomed visitors from all over the world. While we're not saying goodbye to the long evenings and warmer days just yet, we're looking ahead to an exciting autumn, which kicks off with our seventh **Brontë Festival of Women's Writing** from the 22nd to the 24th September.

We wanted to find a way to celebrate how pioneering Charlotte, Emily and Anne were as women writers, and to mark just how much they still inspire literature today through the influence they have on contemporary authors. We hosted our first Brontë Festival of Women's Writing in 2010, and they've continued to go from strength to strength, showcasing and celebrating women's writing in all its forms.

The Festival begins with a **free event at Cobbles and Clay on Friday 22 September, from 7pm.** An expert panel of writers will share their experiences on **Getting Yourself Out There**, and the importance of self-promotion as an author. Come along to hear about how to crowdfund a novel and the growth of self-publishing, and network with other local writers.

If you've ever thought about writing your own play or radio drama, why not come along to one of our **two workshops at Ponden Hall on Sunday 24th September?** You can take tips from some of the best in the business – playwright Deborah McAndrew, whose adaptation of *The Tenant of Wildfell Hall* won plaudits at

York Theatre Royal, and novelist Rachel Joyce, who has adapted all of the Brontë novels for BBC Radio 4. Deborah and Rachel will also be talking about the process of **Adapting the Brontës at West Lane Baptist Centre from 2.30pm on Saturday 23 September** – how do you take some of the best loved texts in the English language, stories that are adored throughout the world, and remodel them for the stage, or for radio?

The Festival headliner this year is Sarah Perry, author of the award-winning *The Essex Serpent*. Chosen as Waterstone's Book of the Year for 2016, as well as being



shortlisted for the Costa Novel Award 2017, *The Essex Serpent* is a gothic Victorian tale which examines the clash between faith and science in a sleepy rural town in the 1890s.

If you'd like to find out more about any of these events, or book tickets, head to www.bronte.org.uk/whats-on or call 01535 640192.

Autumn at the Brontë Parsonage

BRONTË
200
BRANWELL
1817-1848

Where in the Aire Valley? COMPETITION

Where is the red x located in the photo to the right? ?

This month's prize is generously donated by **Keighley Picture House**

Family Ticket (Up to 5 people)

Email your answer to: mail@worthvalleymag.co.uk

The winner will be selected from all correct answers received by 16th September 2017.



Last month's location was The Roebuck, Utley. The winner was Alex Barnes from Utley.

@Google Earth

Brontë Festival of Women's Writing



FRIDAY 22 – SUNDAY 24 SEPTEMBER

A festival showcasing and celebrating women's writing – headlined by Sarah Perry, author of Waterstone's Book of the Year, *The Essex Serpent*. Visit Haworth for a weekend of talks, readings and workshops.



Sarah Perry

Rachel Joyce

Deborah McAndrew

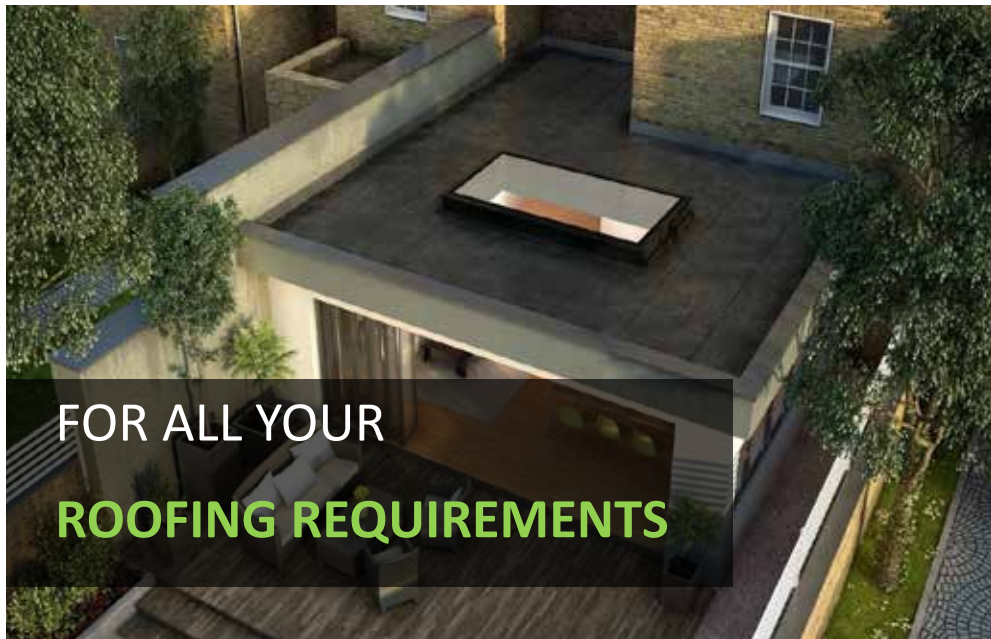
For the full programme and details of other 2017 events, please visit www.bronte.org.uk/whats-on

Brontë Parsonage
MUSEUM

Haworth, Keighley, West Yorkshire BD22 8DR
01535 642323 www.bronte.org.uk

Open Nov-Mar 10am-5pm daily, Apr-Oct 10am-5.30pm. Last tickets sold 30 minutes before closing. Reg Charity: 529952 Reg Company: 73855





**FOR ALL YOUR
ROOFING REQUIREMENTS**

RE-ROOFING

- ◆ Eco-Roof™ - Insulated Roof Systems
- ◆ Re-roofing and Roof Replacement
- ◆ Heritage Roofing Specialists
- ◆ Tiled Conservatory Roof Replacement

FLAT ROOFING

- ◆ Warm flat roof replacement
- ◆ Stunning balcony systems

ROOF WINDOWS

- ◆ VELUX & Beautiful Contemporary Roof Windows & Roof Lanterns

FREE QUOTATIONS * KNOWLEDGEABLE ADVICE

INSURANCE BACKED GUARANTEES



Whitehall Chambers, Halifax

01422 202919 www.ploughcroft.co.uk



‘A roof over your head’ is a basic human need and something that we take for granted. At the very least, we all expect the roof on our homes to keep out the rain and wind so we can stay warm and dry indoors. But should we be expecting more from our roof, now, in 2017? The answer to this question is a resounding “YES”! Nothing lasts forever ...

It is a fact of life that roofs don't last forever, 60 years being a typical lifespan. Leaks and general wear and tear eventually take their toll and mean that repair is no longer cost effective. Unfortunately, a new roof is then the only viable option. We call this a “distress purchase” – an unwanted expense forced upon us – but why not look at it from a different point of view? Considerable advances have been made over recent years resulting in new roofing materials and techniques capable of providing massive savings in energy, your carbon footprint and, of course, money.

Thinking outside the box
Ploughcroft has long been “thinking outside the box” where roofing is concerned. With its innovative approach to roofing technology they consistently encourage homeowners and businesses to do the same. With several new roofing inventions and a successful pitch on TV’s “Dragon’s Den” under its belt, this is no ordinary roofing company. Managing Director Chris Hopkins explains: “We undertake new and replacement roofing of all types including heritage roofing, but a particular speciality is roofing difficult to heat areas like older buildings, bungalows or properties with an attic conversion, room in the roof or vaulted ceiling. With this in mind, Ploughcroft has combined a re-roof with high quality

insulation. This is called Eco Roof™ and is the ideal solution for older homes, with its thermal blanket creating a warm, cosy, usable living space. We carry out insulation from the outside to minimise disruption and the result is a room which stays warm in winter but cool in summer. Eco Roof™ will save you money on heating, increase your property value and also raise your Energy Performance Certificate by up to two bands.”



**CONSIDERING
RE-ROOFING WORKS?
TIME TO THINK
OUTSIDE THE BOX!**

Investing in a new replacement roof is therefore a great opportunity to think to the future. Modern roofing systems will not only make your home weather-proof but a lot more comfortable and energy efficient too. After all - there is only one way energy costs are going! Upgrading your home by bringing it into the 21st century could save a fortune on your heating bills in the long run, helping you pay for those essential home improvements along the way!

For further details about re-roofing options for your home, call 01422 202919



Walking in the Aire

Sutton in Craven to Lund's Tower, Wainman's Pinnacle (circular)

A walk devised by Lee Senior

Walk Distance: 4.6 miles (7.4km) or 6.2 miles (9.9km) including the Hitching Stone.

Maps required: OL21 Explorer (South Pennines) Grid Reference Start Point: SE 006 441

We start in Sutton in Craven at the bus stop on Main Street near to its junction with High Street opposite the pub.

Walk towards the pub along Ash Grove until the road ends. A willow tree is noticed ahead at the end of the road. Turn right here onto Bent Lane. Continue along the lane which starts to bear left as the road surface begins to deteriorate. Eventually we bear sharply left before the track gains a concrete surface now as it twists towards Bents Farm.

Tantalisingly our first objective, the impressive Lund's Tower comes into view at the top of the rocky Earl Crag. Continue on the main broader track resisting the temptation to veer off it. We head past Bents Farm Cottages on our right and into the farmyard. Go through a large gate ahead.

Just beyond, our track swings markedly left by a barn. Walk past the barn, again Lund's Tower is on the skyline ahead of us.

Keep ahead, on the now gradually ascending vehicle track. We go through two gates and continue towards another farm on our left. Ignore the barn and farm buildings, instead keeping on our track. A large gate is noticed with a small wooden stile to the left of it. Go over the stile and continue upwards climbing steadily on our broad grassy track, now bounded by trees on both flanks.

Soon we cross another stile ahead, also coincidentally to the left of a large gate. Continue on past a barn to our right, on this increasingly hilly path adjacent to a wall on our right. There is still a line of trees to our left. We emerge to see a small gate ahead of us at High Jackfield Farmhouse.

Go through the gate briefly before bearing right on to some stone cobbles. Continue as the cobbles soon give way to a concrete track. Head up the broad track and over a cattle grid. Don't be tempted to turn left off

the track up the open fields which are private. Why not stop now for a brief moment to catch your breath while admiring a fine view of the Aire Valley below.

We find ourselves almost opposite the tower, yet paradoxically we have to walk slightly beyond it before we can begin the final assault to it. Eventually the track levels out. We reach an abandoned farm on our right where our main track bears left, twisting as it heads inexorably to meet Dick Lane at the top. A glimpse of Pendle Hill can be seen in the far distance on the skyline as we look half right.

Go through the gate ahead and turn left onto the road. Take care on this sometimes moderately busy road. There is no footpath here. We stay on the road for approximately five minutes ascending steadily as we go. We soon find ourselves almost adjacent again to the tower. As we look ahead, in between some telegraph poles a fingerpost is noticed (signed, Cowling Pinnacle, half a mile).

Take this well-worn, popular path that quickly climbs up some concrete steps. A few moments later we've joyously made it to the Earl Crag summit plateau. An obvious level hard standing path leads us to the impressive Lund's Tower (1,112 ft).

Upon leaving the tower our next objective is Wainman's Pinnacle. The Pinnacle sits proudly just under half a mile away also on the summit of Earl Crag.

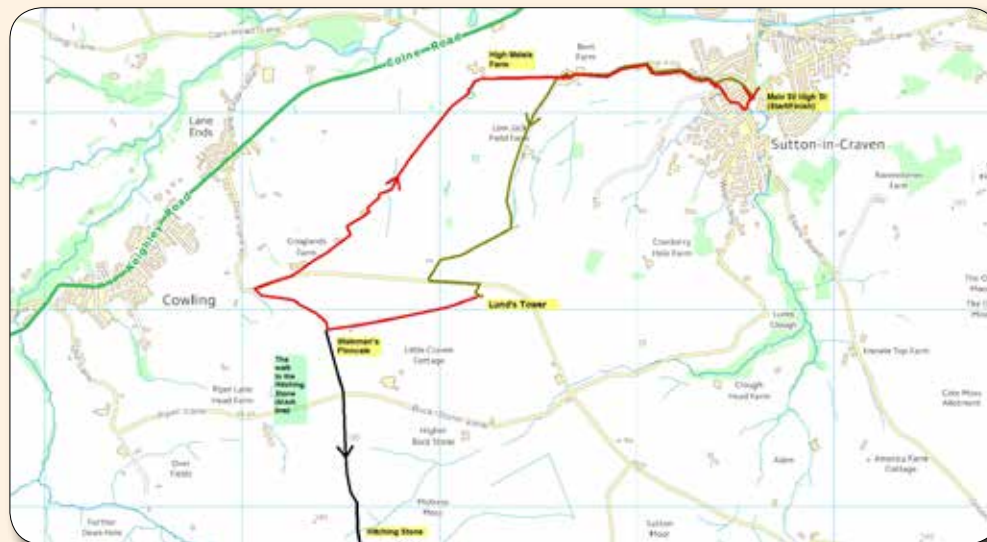
Initially and briefly we retrace our steps. However this time we ignore the descending steps that we climbed earlier. Instead we retain our height and go through a gate ahead. Continue along the grassy and well-worn path along the summit top. Take care not to veer too far near the edge of the rocky outcrop along this section.

We soon pass a stone seat slightly set back to our left. Continue on our exposed path, as we make a beeline for the Pinnacle, which will become increasingly prominent. Soon an easy to walk on grassy path leads us to a gate. Go through it before joining up with a wall for the final short section. We head through a further gate continuing to soon reach the Pinnacle.

Having reached the Pinnacle there is now the option of heading to the wonderfully named "Hitching Stone" just under one mile away. The stone is well worth seeing close up for those wanting to extend the mileage.

However, stout walking boots are needed for this section. Essentially the land is rather exposed heather

PULL OUT & SAVE



moorland, which is rather boggy in a good number of places all year round. This is particularly true after recent rainfall. This section is perhaps not for young children or the elderly.

To reach this monumental stone takes approximately 30 minutes. To return back to the Pinnacle will take a further 30 minutes.

NB: Anyone deciding to head to the stone is advised to retrace their steps back to the Pinnacle.

If you fancy walking to the Hitching Stone then please use the following directions:

With your back to the Pinnacle, head towards the wall corner ahead of you.

Keep to the right hand side of the wall and parallel to it. Continue along this grassy track passing a car parking area. Cross the minor road. Go through the smaller of the two gates ahead. Keep the same directional line as we had previously, fairly close to the stone wall. The Hitching Stone is now noticeably closer, directly in line with the wall. We are now on open access land. There are occasions when we need to briefly leave the wall to find a less boggy section underfoot! We head through an open stile as we make a final assault for the stone. As the wall ends a fence takes its place. Resist going through the gate. Instead continue as before, this time with the fence on our left. Very soon we find ourselves arriving at this impressive stone.

After enjoying the views it is time to head back to Wainman's Pinnacle. Simply retrace your steps, by keeping to the left of the fence and then the wall. Cross the minor road to find ourselves back at the Pinnacle.

We now begin our return walk to Sutton. The first task is to safely descend from the crag summit and reach Dick Lane which is visible below.

With our back to the Pinnacle, turn right on the well used and relatively level earth track, for a very short distance. Keep a careful look out on our right through the rocks; a narrow initially steep route is visible next to a large boulder. Please do stay observant here as this thin path is easy to miss.

Carefully negotiate this descending, briefly rocky path. The narrow route weaves its way through the rocks for a short while before linking up with a distinct, good-looking grassy path below. If you miss the thin descending path there are other similar adjacent paths that will take us to our objective of Dick Lane. Take this descending easy to walk on well used path. Soon another well used route merges into ours from the right. Continue to lose height until we reach a junction of paths. Here take the downhill path, remembering our objective is to reach the road. The route is easy to follow. We soon find ourselves leaving the crag side, reaching the road near a fence post. We join the road to the right of the sharp bend.

Turn right heading up the road, for a minute or so, taking care as there is no footpath. Keep a look out for a minor tarmac track heading to a cluster of buildings on the left. Cross the road and take this left hand descending vehicular track that takes us towards Craiglands Farm. Soon the tarmac gives way to a rougher surfaced track as we head towards a further building and barn. At the barn, keep ahead on to a

building and barn. At the barn, keep ahead on to a narrow grass path leading to a wall stile. A waymarker arrow is visible, to the right of the stile, encouraging us to continue ahead. Cross the stile and continue on the same directional line across the field. Next, we head towards some gate posts where a yellow waymarker points half left. Our route now leads us diagonally down a field to the right of the buildings at Crag End. Here we rejoin the vehicle track. We turn right along the track (away from buildings). We quickly pass a wooden post with a multitude of waymarker arrows on it. Continue along this easy track for only a very short distance until we reach a gate opening ahead of us.

Do not continue along the vehicle track any further. Instead at the wall in front look right to see a line of trees just beyond the wall. Although not initially obvious a small wall stile can be seen in the wall corner ahead of the trees. This is the next part of our route. Cross the stile noting a holly tree next to it. Continue into the next field which is level to begin with. A hedge is close to us on our



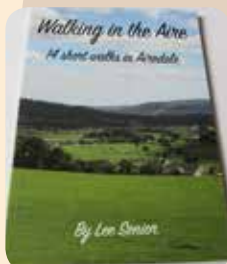
left. Keep close to the hedge as we descend into the field corner. A distinct and yellow marker beckons us forward over the wall. Now we gradually move away from the hedge, diagonally and always gradually descending. On the wall in front of us two large yellow waymarkers are spotted. Follow the arrows that lead us towards the field corner where three gates are closely situated together. Our path is towards the middle of the three gates. As we get to the gate we will see there is a small stile taking us through into the next field. Head into the field and we descend diagonally and straight towards the opposite corner of the field, passing a large gate in the wall to our left.

Don't go through the gate. Instead ignore it and walk near to the wall which is now on our left. A yellow waymarker confirms our route. We pass another gate to reach a rather unusual corrugated gate in the field corner. The gate has a white arrow sprayed on it confirming our route. Go through the gate and we find ourselves on a broader track, which is now rougher underfoot. The track swings left then right, before it turns into a short enclosed route as it descends to join a spring on the right. Continue as we negotiate a stile next to a gate at High Malsis Farm Cottages.

Proceed on the obvious level track ahead on the right hand side of the cottages towards a wooden stile to the left of a gate. Don't be tempted to take any alternative routes here. Instead we cross the stile into a level field before repeating the process again as we go over another stile also next to a gate, close to the wall on the left. We walk parallel to the wall then over a third stile in succession positioned next to a gate. Continue close to the wall to eventually reach a wooden gate with a very narrow stone stile to

the left. The stile is tricky to negotiate as it is protected by two posts. We now find ourselves back in familiar territory at Bents Farm.

Our remaining route now back to Sutton in Craven is the reverse of the outward leg earlier; simply head back through the farmyard at Bents Farm. Go down Bent's Lane, before entering the residential streets of Sutton in Craven. When we reach the willow tree on our right, this time we continue straight along on North Road instead of turning left down Ash Grove. At the end of North Road we find ourselves back on the High Street. Turn left here to finish the walk.



If you enjoyed this walk you will most likely enjoy Lee Senior's book, **Walking in the Aire**; it is available on facebook <https://www.facebook.com/walkingintheaire/> for £6.50. Or meet the author at the Keighley Lending Library on Heritage Day, Sept 9th; Lee will have a stall in the Library and is offering a special discount on books purchased on the day. **Free delivery** is available in the Keighley and Bingley areas. To pay by cheque or for general enquiries, please email: walkingintheaire@gmail.com

The text is © copyright of Lee Senior and must not be reproduced without prior permission.

Worth Valley Fencing

Fencing manufacturers & suppliers

- Palin Panels
- Decking
- Overlap Panels
- Bespoke Panels
- Feather Edge
- Met Posts

Full fitting service available

Tel: 01535 665040
email: newfabs@btconnect.com
Unit 3, Crown Works, Worth Way, Keighley BD21 5LR

GREEN & IDY TREE CARE

All aspects of tree work undertaken from hedge trimming to large tree removal. Fully insured and qualified with over 10 years experience. Logs and woodchip supplied.

Call for free quotes/advice
07506 729731 or 01535 531634

City Guilds NPTC

S.A.S LANDSCAPE & GARDENING SERVICES

Fencing, Flagging, Decking, Turfing, Grass & Hedge Cutting, Weeding & General Tidy-ups.

07766 564676
stevesmith31@tiscali.co.uk

Shaws Garage Doors

- Repairs To All Makes/Types of Garage Door
- Door Replacements • Remote Control Systems • Roller Shutters

Call Simon Shaw on
07540 892959 / 01423 847957
www.shawsgaragedoors.co.uk
 We Now Accept Debit/Credit Cards

Is your conservatory Too hot in summer Too cold in winter?

Warm Roof have the solution

Call us today for a free no obligation quote and transform your conservatory into an all year round living space.

All of our installations are covered by a Homepro Insurance backed warranty.

01422 416 292 • www.warmroofsolutions.co.uk


Accountax

- Self Assessment returns
- Partnership returns
- VAT services
- Monthly Bookkeeping
- CT600 Returns

For an affordable accountant in your area

Call Laura on 07582 669144 or email laura.alderson@accountax-kly.co.uk

Ask Andrina
Office Solutions

Sage 50
VAT Returns
Cash Flow
Bank Reconciliations
Bookkeeping
Credit Control
Office Duties

Tel: 07876 345422 Silsden
Email: andrina@askandrina.co.uk
Web: www.askandrina.co.uk
Twitter: @askandrina



Office Furniture Outlet
Eagle Mill, Dalton Lane
Keighley, BD214HT

Andrea Jannetta
Sales & Marketing Manager
01535 681111

andrea@officefurnitureoutlet.co.uk
www.officefurnitureoutlet.co.uk

WORTH ACCOUNTING

Affordable accountants
Companies & sole traders
Self assessment

andrew@worthaccounting.co.uk
8 Station View Oxenhope
Keighley BD22 5SB
01535 644000

COMPUTER UNIVERSE

No fix, no fee + free diagnosis + advice!

PC / Apple / Laptop servicing and sales.
Fixed rate competitive pricing.
Fast friendly service by experienced, local experts.
Virus removal, upgrades, speed-ups, data recovery + more.
New and refurbished laptops from £200. Custom PC's tailored for you.
Game console, iPad, iPod, iPhone etc repairs.
VHS to DVD conversion, internet cafe + training.

19A Briggate, Silsden, BD20 9JS
www.thecomputeruniverse.co.uk

01535 958082
info@thecomputeruniverse.co.uk

UP TO HALF PRICE
Plus Every Carpet Fitted Free*

No Deposit, UP TO 4 Years 0% Interest Free Credit†

UNITED CARPETS WOODFLOOR & BEDS

- BEDS UP TO HALF PRICE
- VINYL FROM ONLY £7.16M²
- RUGS TAKE AWAY FROM £39.99
- ARTIFICIAL GRASS FROM ONLY £8.99M²
- LAMINATE FROM ONLY £8.36M²

Carpets from only £3.99M²

Shipley Steadman House,
Otley Road, BD17 7EX
01274 533 416

*Idle Five Lane Ends, †No Beds Available
Bradford Rd, BD10 8SA
01274 614844 (Next to McDonalds)

Keighley Coronation Business Centre,
Hardings Rd, BD21 3ND
01535 663999

www.unitedcarpetsandbeds.com or call Free on 0800 344 442

Products subject to availability. *Free fitting applies when you buy the equivalent size of our Airstep or Treadmore underlay. Stair surcharge applies. Free fitting offer does not apply to laminate wood or vinyl flooring. Stocks vary from store to store. Colours in photos may vary slightly due to print quality. United Carpets accept no responsibility for printing errors. †United Carpets Woodfloor and Beds acts as a credit broker and only offers credit products for Secure Trust Bank PLC trading as W12 Retail Finance Ltd. All credit is provided by external finance companies as determined by United Carpets Woodfloor and Beds. Minimum order applies.



Bob Beattie
PVCU **FENSA**
Registered Company

from a single window to a complete house
REPLACEMENT WINDOWS & DOORS,
FASCIAS, SOFFITS, GUTTERS

Tel: 01535 646761
Mob: 07973 846825

PVCU REPAIR SPECIALIST

Red Dog Pest Control

Moles Wasps Rats Mice Ants ...etc!

Fully qualified & Insured based in Keighley.
7 days a week with 24 hour call outs

07805 371 101
@reddogpestcontrol
RDPestcontrol@hotmail.com



PAR Masonry Services Limited



Specialists in:
Pointing & Restoration, Building Cleaning, Weather proofing, Lime mortar, Stone & Brick Replacement

Contact us for a free quotation
We are available to discuss any project and provide help and advice. We look forward to offering you the very best in craftsmanship and the highest quality of service.

Please contact **01535 648809**
enquiries@parmasonry.co.uk • www.parmasonry.co.uk

AIREDALE
ENTERPRISE
SERVICES

NEW COMPUTER COURSES STARTING IN SEPTEMBER 2017

suitable for individuals whether employed,
self employed, unemployed or retired

**BOOK
TODAY!**

FREE - **Managing Money Online**

training session - An introduction to online banking and ways for you to save money by using online services.

1 hour training sessions will run on a Monday afternoon **starting on 4th September 2017 at 1pm**

FREE - Boost your digital knowledge and get more customers for your business - **Online Digital marketing skills training.**

2 hour training sessions will run on a Monday morning **starting on 4th September at 10am.**

Basic Computer Skills Training -

An introduction to using the computer, mouse and keyboard including using Microsoft word and using the Internet.

**Thursday 28th September 10am - 1pm
Cost £35**

You will receive a warm welcome along with a cuppa & biscuits at our training venue on Sunderland Street, Keighley BD21 5LE.

To book a place on any of the above sessions please call 01535 607775 or email lynnehenry@airedaleenterprise.org.uk

Other computer courses are available including Word, Excel & Introduction to Email marketing.



Domestic Appliance Repairs...

& P.A.T TESTING

CONTACT LEONARD
01535 657 917
07843 613 292

CLEAN IMAGE
Professional Carpet & Upholstery Cleaning

Carpets & Rugs, Blinds & Curtains,
Upholstery, Leather, Mattresses.

Richard Helliwell
07770 851054 • 01535 271659
www.cleanimagecleaning.co.uk
richard.cleanimage@gmail.com

MENTION WORTH & AIRE VALLEY TAGS FOR 10% DISCOUNT.

Adele's
CLEANING & IRONING SERVICE

£20 for 35 items

Telephone:
01535 648895
Mobile : 07837 452604

Free Collection & Delivery

Cobbydale
Construction Limited

T: (01535) 653530
www.cobbydaleconstructionltd.co.uk

Craven Carpet Cleaning **50% OFF**

Half Price Carpet & Upholstery Cleaning

• Lounge 12' x 16'	£70	£35
• Hall, Stairs And Landing	£70	£35
• 3 Piece Suite (From)	£110	£55

Domestic & Commercial Work Prices subject to sight of work

Mob: 07710 787 399
Eve: 01535 630 713

Craven Carpet Cleaning
Carpet & Upholstery Cleaning

WILSDEN SELF STORAGE

- Local Secure Storage with 24 Hour CCTV.
- Units from 25 sq.ft. to 100 sq.ft.
- From £14.50 (No VAT)
- Personal or business use.

Well House Mill, Main St., Wilsden BD15 0JW
Tel: 01535 275594
www.wilsdenselfstorage.co.uk
email: pm@wilsdenselfstorage.co.uk

Steel's
of Addingham

EST. SINCE 1940
STILL FAMILY OWNED & OPERATED.
TRAVEL SAFELY IN COMFORT AND STYLE
WITH OUR MODERN FLEET OF COACHES.

12 up to 75 seat coaches available for private hire, corporate & group travel. Ideal for weddings, Airport, School Groups, Special Occasions.
Local en-route pickups within 20 miles of Addingham

2017 Tours

Sep Spanish Highlights - Roman Segovia	Dec Thursford Xmas Spectacular Show
Sep Mystery Weekend	Dec Christmas at Carlisle
Oct Scottish Autumn Tints	

TEL: (01943) 830206 / 830720
www.steelscoaches.co.uk info@steelscoaches.co.uk

Every Wednesday Knit & Knatter at Sutton Cricket Club 1.30pm - 3.30pm. Everyone Welcome.

Steeton Bobbins WI meet the first Tuesday of each month at **7pm at Steeton Hub**. More info contact Diane Pritchard 01535 653748.

Craven Mosaic and Crafts Group meet **Thursdays at 12.30pm to 3pm at The Cricket Pavilion**, Royd Hill, Sutton. www.cravenmosaicandcrafts.co.uk

Book Club at **7.30pm Steeton Hub** is every second Wednesday of a month.

Every Tuesday 1.30 - 3pm Games & Social Club at Glusburn Institute.

Enjoy an informal afternoon playing your favourite games or just enjoying a hot drink & chat. Table Tennis is also available. £2 including refreshments. More info call 01535 630223 or 07834 713735

Every Tuesday 10 am to 12 Sewing/ Stitch Group at Glusburn Insitute. Call Claire 07904 010430 or email cketterman@aol.com.

1st Wednesday in each month

Breathe Easy Aire Valley 1.45 -3.45 at the **Steeton Hub** BLF Respiratory Support Group Contact Ann Caden 07720810294 or email: anncaden@yahoo.co.uk

Time for Me (Carers Resource) is a monthly group for carers and over 50's. Fun activities and friendly support at **Steeton Hub**, Stone Grove. More info call Carolyne 01274 449660.

Dementia Friendly Keighley seated exercise classes are every Monday **11.15am - 12pm at Central Hall, Keighley, BD21 3JD** More info call Maggie 07971 527525 or email info@dementiafriendlykeighley.org.uk.



The **Silver Line Helpline** for older people **Information, friendship, advice** Calls are FREE: 0800 470 80 90 FREE, confidential 24 hour service www.thesilverline.org.uk. For a group talk/presentation about The Silver Line Contact the Community Engagement Volunteer, Jeanette House, Tel: 07873459188.

May until 5th November Welly Walk at Bolton Abbey. Tree climbing, tunnels, slides, bridges and beams, amazing fun, forget being clean!!! Follow the Welly Walk signs and enjoy a free woodland adventure trail from the Stepping Stones to the Cavendish Pavilion.

Sat 2nd Sept Keighley Horticultural Society 181st Annual Show held in conjunction with the Keighley and District Agricultural Show Society at King George V Playing Fields, Marley, Keighley, BD21 4DB.

Sun 3rd Sept Vintage Trains at Keighley & Worth Valley Railway. These services are in addition to usual steam train services which will continue as normal. There's no need to pre-book your tickets – just purchase them on the day of travel. On each occasion of the Vintage Train, there will be a Brass Band at Oxenhope to add to the atmosphere. **Thurs 7th, Fri 8th, Sat 9th & Sun 10th Sept 10am - 4pm Rail Story, Ingrow & Keighley & Worth Valley Railway**. Part of the Heritage Open Day. Free Event.

Fri 8th & Sat 9th Sept Hi de Hi by Sutton Green Hut Theatre Company at **Sutton Village Hall**. Licensed Bar & Supper £9 call 01535 632289 for tickets.

Fri 8th until Sun 17th Sept Saltaire Festival at Saltaire Village. More info www.saltairefestival.co.uk.

Sat 9th & Sun 10th Sept 10.30am - 4.30pm East Riddlesden Hall - Heritage Open Day - Free Event. You can follow a colourful stick trail, make mud pies, build a den and play traditional games on the lawn. How about getting crafty, running through a willow tunnel, spotting bugs and tracing your way to the centre of a grass maze?

Sat 9th Sept 1pm Heritage Open Day at Cliffe Castle Museum. Talk and tour on the **Cottingley Fairies**. The Story of the 'Fairies at the bottom of the garden' is familiar to many world wide. In this talk Social History Curator Heather Millard will look at the context of the photographs taken in 1917. This talk is free, but booking is essential. To book your place please call 01535 618231

Sun 10th Sept Battle of Britain Parade from Chapel Hill to the **High Street in Skipton**.

Sat 16th & Sun 17th Sept 9.30am - 4pm Saltaire Vintage Home & Fashion Fair at **Victoria Hall, Saltaire**, 40+ stalls of vintage loveliness for you and your home including genuine vintage fashion,

such as 1940's tea dresses, 1950's prom gowns, jewellery, accessories, furniture, homewares, books and collectables, all from the 1920's to the 1980's...

Fri 22nd to Sun 24th Sept Fallfest at Glusburn Institute www.fallfest.co.uk

Weds 27th Sept 7.00pm South Craven Community Library, Main Street, Cross Hills, BD20 8TQ

AA Dhand a local author will come to talk about his first novel '**Streets of Darkness**' a crime thriller set in Bradford. Tickets £2.00 including refreshments Tel 01609 534502 e-mail: enquiries@sccl.org

Fri 29th Sept until Sun 1st Oct Skipton Puppet Festival takes place at venues all around Skipton. Many events are free and suitable for all ages. More information www.skiptonpuppetfestival.co.uk.

HAWORTH Sausage & Cider Festival

The Old School Rooms
Haworth BD22 8DR

OVER 20 SEASONAL CIDERS AND ALES INCLUDING BRANWELL'S GIN & RUM SHACK

FRI 6th OCTOBER 2017
Open 12 till 6pm - From 7pm Enjoy an Evening with
'BAVARIAN' OOMPA BAND

SAT 7th OCTOBER 2017
12 till 6pm - Open Public Session
From 7pm Enjoy a howlin' evening with
'HOWLIN' JOHNNY AND THE DEVIL REJECTS'

SUN 8th OCTOBER 2017
12 till Close
FAMILY FUN DAY
Crafts, Games, plus more!
CHILDREN FREE

MARSH TOP FARM SHOP
Providing a wide range of handmade, local tasty sausages served with amazing pickles and chutneys

£4 ENTRY

www.haworthbeerfestival.co.uk
Info@haworthbeerfest.co.uk
The Old School Rooms Haworth BD22 8DR
(between Haworth Church & Brontë Parsonage Museum)

Haworth Beer Festival
Marsh Top Farm Shop

Brigantia Bushcraft
Learn bushcraft and survival skills in the great outdoors. Increase your self-reliance and confidence out in the natural world.

Fire lighting - shelter building
foraging - tracking
Courses for adults and families

www.brigantiabushcraft.com
Brigantia bushcraft 07950 575752

Heel2Toe
FOOT HEALTH CARE
Christine Harker
Paul Shuttleworth
& Rachael Somers
Foot Health Practitioners

Contact us for Clinic or Home Appointments
07504 714072

Professional Standards Authority Accredited Registrar

Home Tutoring
Qualified HLTA with 11 yrs experience. Providing Tuition for all levels in various subjects from KS1 to GCSE (incl. the new 9-1 curriculum) for ages 4-16.

Contact Mrs Meher Modak
Steeton 07903 069 942
mehermodak@hotmail.com

Less Stress with Yoga

New classes start 4th September
Sutton Village Hall
Monday 2-3pm and
Monday 8.15-9.15pm

Yoga makes you feel good
..... and not just in class

Ring Shelley 07957488639
www.shellyoga.com • shellrob@hotmail.co.uk

£6 per session – paid in block of 6 weeks
Other classes available - see website

Shelley Robinson
British Wheel of Yoga Teaching Diploma
BA (Hons) Health Studies
PG Dip Public Health - Health Promotion

KUMON TWO-WEEK
FREE TRIAL
1 OCTOBER – 20 NOVEMBER
KUMON MATHS AND ENGLISH STUDY CENTRES

Book your two-week Free Trial now!
Keighley 0784 152 6410

Terms and conditions apply. **KUMON**

DSM Plumbing & Heating Engineers
Bathroom & Fireplace Centre
WORCESTER Accredited Installer

Gas, LPG & electric fires • Fireplaces • Multi fuel stoves
Central heating • Bathrooms supplied & installed
Boilers • Radiators
Maintenance & servicing of all gas appliances
Showroom open: 8.30-5pm Mon-Thurs • 9-4pm Fri & Sat

www.dsmlumbingandheating.co.uk
01535 663313 • 07734 567222

Unit 4 Forward Mills, Goulbourne St., Keighley BD21 1PG

safe HETAS

Adrian Butterfield
PROPERTY SERVICES

Tel: 01535 671359
Mobile: 07726 350 890

Central Heating • Boilers • Plastering • Roofing
Tiling • Fitted Kitchens • Bathrooms • Bedrooms

13 Sunnyhill Grove, Keighley BD21 1RU

Student of the Year shines in the face of adversity

Student Ross Taylor was this year's Engineering & Motor Vehicle Student of the Year at Leeds City College. He joined the college in 2013 and has worked towards completing level 2 and 3 apprenticeships in Fabrication and Welding with equipment supplier, Hopkins Catering Limited.



During this time, Ross faced substantial adversity when his girlfriend was diagnosed with a brain tumour. He spent most of his time by her side at hospital while she endured invasive surgery but managed to continue his studies through his dedication and commitment to the course.

Ross said: "It was a difficult time for me but I wouldn't have given up on either. The support I received at college was fantastic and the compassion from tutors and fellow students was phenomenal. It certainly gave me the courage to continue and it feels surreal to look back on my experience with an award in my hand, proving that hard work and perseverance really does pay off.

"In the future, I would love to work for Rolls Royce or in the aerospace industry and thanks to Leeds City College; I'm on my way to achieving great things."

Ross first developed an interest in fabrication and welding when he got involved in his friend's engineering business

and the rest was history. The ambitious student even transferred to Keighley College in his fourth year when his tutor moved there to teach.

His tutor said: "Despite his care commitments, Ross has been an enthusiastic learner, gaining distinction grades in all modules, including additional ones he enrolled on for further development.

"Ross has always been there to support his peers and share his experience, after being appointed a team leader at Hopkins in recognition of his talent, where he helps develop new apprentices."

Ross is now on his way to achieving his dreams with his girlfriend by his side, who has fully recovered from her illness.

For more information on Fabrication and Welding courses at Leeds City College and Keighley College, visit leedscitycollege.ac.uk or keighleycollege.ac.uk.

Sudoku Solutions

from page 10

7	4	9	6	3	8	2	1	5
5	1	6	4	7	2	3	9	8
3	2	8	5	1	9	4	6	7
8	9	4	7	5	3	6	2	1
1	5	3	2	8	6	7	4	9
6	7	2	9	4	1	8	5	3
4	8	7	1	6	5	9	3	2
2	6	1	3	9	7	5	8	4
9	3	5	8	2	4	1	7	6

2	4	5	7	3	9	6	1	8
8	7	9	5	1	6	4	2	3
1	3	6	8	2	4	7	5	9
9	2	7	6	4	3	1	8	5
6	8	3	9	5	1	2	7	4
5	1	4	2	7	8	3	9	6
4	9	8	1	6	2	5	3	7
3	5	2	4	9	7	8	6	1
7	6	1	3	8	5	9	4	2

6	2	3	7	4	1	9	8	5
5	4	9	2	8	3	6	7	1
8	7	1	6	9	5	3	2	4
4	3	6	9	2	8	5	1	7
1	9	7	5	3	4	8	6	2
2	8	5	1	6	7	4	3	9
9	6	4	8	1	2	7	5	3
7	1	8	3	5	9	2	4	6
3	5	2	4	7	6	1	9	8

2	3	4	7	1	8	6	9	5
6	1	7	9	5	3	2	4	8
8	9	5	6	2	4	3	7	1
1	8	9	3	4	5	7	2	6
4	6	2	1	9	7	8	5	3
7	5	3	2	8	6	4	1	9
9	4	8	5	3	2	1	6	7
5	2	6	8	7	1	9	3	4
3	7	1	4	6	9	5	8	2

Is Business slow? Get it moving...



Reach over 20,000 local homes & businesses from only £29.66+VAT



3 editions cover the Worth & Aire valleys

We are trusted and local

Genuinely community focused with over 10 years in publication

Plus: **We can help with your social media!**

Call Jo on **01535 642227**
mail@worthvalleymag.co.uk



EVENING CLASSES ALSO AVAILABLE!

APPLY NOW!

Start a course with us this month

Electrical | Plumbing | Motor Cycle Studies | Sport
Public Services | Games Design | Business | ICT | Hairdressing
Beauty | Complementary Therapy | Massage Therapy
Beauty Therapy | Nail Technology | Travel and Tourism



Apply for a course at keighleycollege.ac.uk
Call 01535 685 000 or email enquiries@keighleycollege.ac.uk

Say you saw it in the Aire Valley Mag!

BUSINESS DIRECTORY

Accountancy/Business/ Finance related services

Accountax p20
Airedale Enterprise p22
Ask Andrina p20
Worth Accounting p20

Aerials/Audio/TV

Digi-man Aerials p9
ILR p9

Animal related

Aireworth Dogs in Need p6

Attractions/Groups/ Events/Community

Brigantia Bushcraft p27
Bronte Parsonage p12/13
Fallfest p11
KWVR p8
Sausage & Cider Festival p26
Walking in the Aire p16-18
Yoga p27

Building Services/ Joinery/Repairs

Adrian Butterfield p27
Cobbydale p23
Domestic Appliance Repairs p23
PAR Masonry p21
Ploughcrofts p14/15
Shaws Garage Doors p19

Chiropody

Heel2Toe p27

Cleaning / Domestic

Adeles Ironing p23
Clean Image p23
Craven Carpet Cleaning p23

Domestic Appliance Repairs p23

Computer related

Computer Repairs p11

Computer Universe p21
ebit Technology p11

Conservatories

Ploughcrofts p14/15
Warm Roof Solutions p19

Electricians

AA Electrical p9
JS Electrical p9

Fencing

Worth Valley Fencing p19

Fuel/Heating

Anchor Logs p9

Gardening

Green & Tidy p19
SAS Gardening & Maintenance p19

Health/Mobility/Driving

Driving Miss Daisy p4
Fenetic Wellbeing p11

Holidays/Travel

Steel's of Addingham p23

Homes/Property

Skipton Properties p5

Opticians

Silsden Opticians p4

Painting & Decorating

R.P. Decorating p11

Pest Control

Red Dog p21

Plumbing /Tiling/ Kitchens

Adrian Butterfield p27
Cobbydale p23
DSM p27
Queensbury Kitchens p32

Retail

DSM Bathroom & Fireplace Centre p27
Office Furniture Outlet p20
United Carpets & Beds p20

Roofing

Broomhill Roofing p9
MB Roofing p9
Ploughcrofts p14/15

Slimming

Slimming World p2

Schools/Colleges/Tuition

Bradford Grammar p2
Home Tutoring p27
Keighley College p28/29
Kumon p27

Solicitors

Walker Foster p32

Storage

Wiltsden Self Storage p23

Wills

In Home Wills p7
Windows & Doors
Bingley Windows p3
Bob Beattie p21
Cloudy2Clear p7
Shaws Garage Doors p19



Worth & Aire Valley Magazines

Want to promote your business or organisation. We cover 20,000 local households!

We also have free community page listings (as space permits)

Call us on 01535 642227

or email
mail@worthvalleymag.co.uk

WORTH & AIRE VALLEY MAG

COMMUNITY NEWS AND LOCAL BUSINESS DIRECTORY

Reach 20,000 households in Worth & Aire Valley



Go in 2
Groups,
get 3rd
one FREE!

From only £29.66 (+VAT) per magazine*
(* 1/8 page colour, 3 month commitment)

Established in 2006 we are genuinely your
local Community Magazine.

- ✓ Local Business Directory
- ✓ Supports LOCAL Groups
- ✓ Puts money back in to the local economy

- ✓ Delivered through doors monthly
- ✓ Community News
- ✓ Business Profiles



Here's what our advertisers say...

Advertising in the Worth and Aire Valley magazines has been critical to the success of my business. The magazines are highly rated by my customers and I have lost count of the number of people who tell me that they found me in these magazines. I have tried numerous ways to advertise my business but none of them have been as successful as advertising in the Worth and Aire Valley magazines. Sensible advertising costs and local content make these magazines a focal point in the local community.

Chris (Bristles Chimney Sweep Service)

I have advertised with the Aire Valley Mag now for a number of years to which I have had a fantastic response, I feel that the magazine is an honest publication that local people have learnt to know and trust. I know from the feed back that I have received from my customers that this little book is not only an interesting read but also provides a solid base for local business to promote there services. I can only thank Joanne and the team for consistently providing a quality publication that is well presented, has great distribution and is favoured above other such magazines that we receive through our letter boxes. May all your great work continue!

Steve Edwards, Managing Director,
Cobbydale Construction Ltd, Silsden

Contact Us: 01535 642227 Email: info@worthvalleymag.co.uk

www.airevalleymag.co.uk

Walker Foster Solicitors

Your local, legal experts – providing friendly, professional, value for money advice for you, your family and your business

- Conveyancing
- Wills, Inheritance/Trust planning, Powers of Attorney
- Estates Administered
- Family law services
- Fixed fee legal services
- Commercial Property
- Business Sales & Purchases
- Business Dispute resolution
- Debt recovery



Contact us and tell us how we can help:

T: 01535 656000 E: info@walkerfoster.com www.walkerfoster.com

With offices in: Silsden, Ilkley, Skipton and Barnoldswick

Queensbury Kitchens Bedrooms & Bathrooms

Fully fitted or supply only. Made to measure replacement doors, worktops also available.



We will not be beaten on price-trade or retail

Contact us on: 01274 882349 • www.queensburykitchens.com
Black Dyke Mills, BD13 1QA